

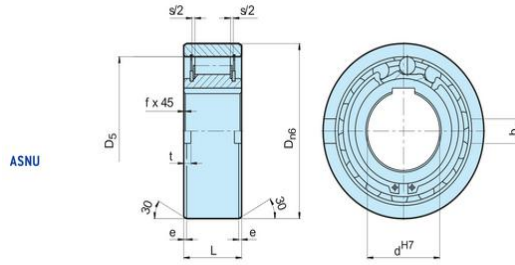
**ASNU Series**

Type ASNU is a roller type freewheel non-bearing supported-. Bearings are required to support axial and radial loads. Lubrication and sealing must also be provided by the installation. Nominal outer diameter is the same as a series 63.. ball bearing

A typical arrangement is to install this type alongside a bearing within the same location tolerances, as shown on the following page. The inner race is keyed to the shaft. The outer race has positive n6 tolerance, to give a press fit in a H7 housing. Additional side notches in the outer race provide for positive torque transmission.

If the housing is to K6 tolerance, use of the notches is not necessary, but the housing must be strong enough to not expand after assembly. This design can accept an axial misalignment of inner and outer race of  $\pm S/2$ .

**Freewheel Clutch Bearings: ASNU Series**



Motion(shanghai)Industrial Development Co.,Ltd

Type	Size	Overrunning Speeds												Weight	Drag torque
		$T_{KN}^{(1)}$	$n_{imax}^{(2)}$	$n_{amax}^{(3)}$	$D_{n6}$	$D_5$	L	b	t	s	e	f	$T_R$		
MOTN	$d^{H7}$ [mm]	[Nm]	[min-1]	[min-1]	[mm]	[mm]	[mm]	[mm]	[mm]	[mm]	[mm]	[mm]	[mm]	[kg]	[Ncm]
ASNU	8	12	3300	5000	35	28	13	4	1.4	2.4	0.6	0.3	0.07	1.6	
ASNU	12	12	3300	5000	35	28	13	4	1.4	2.4	0.6	0.3	0.06	1.6	
ASNU	15	30	2400	3600	42	37	18	5	1.8	2.4	0.8	0.3	0.11	1.9	
ASNU	17	49	2300	3400	47	40	19	5	2.3	2.4	1.2	0.8	0.15	1.9	
ASNU	20	78	2100	3100	52	42	21	6	2.3	2.4	1.2	0.8	0.19	1.9	
ASNU	25	125	1700	2600	62	51	24	8	2.8	2.4	1.2	0.8	0.38	5.6	
ASNU	30	255	1400	2200	72	60	27	10	2.5	2.4	1.8	1	0.54	14	
ASNU	35	383	1200	1900	80	70	31	12	3.5	2.4	1.8	1	0.74	16	
ASNU	40	538	1100	1700	90	78	33	12	4.1	2.5	1.8	1	0.92	38	
ASNU	45	780	1000	1600	100	85	36	14	4.6	2.5	1.8	1	1.31	43	
ASNU	50	1013	850	1350	110	92	40	14	5.6	2.5	1.8	1	1.74	55	
ASNU	60	1825	750	1050	130	110	46	18	5.5	3.6	2.6	1.5	2.77	110	
ASNU	70	2300	600	950	150	125	51	20	6.9	3.6	2.6	1.5	4.16	140	
ASNU	80	3275	550	850	170	140	58	20	7.5	3.6	2.6	1.5	6.09	180	
ASNU	90	5325	500	750	190	160	64	20	8	3.6	2.6	2	8.2	230	
ASNU	100	7250	450	680	215	175	73	24	8.5	3.6	2.6	2	12.6	380	
ASNU	120		370	550	260	215	86	28	10	3.6	2.6	2.5	22	650	
ASNU	150		300	460	320	260	108	32	12	3.6	3.6	2.5	42	1000	
ASNU	200		230	350	420	350	138	45	16	7.6	3.6	3	93	2000	

www.motnbearing.com