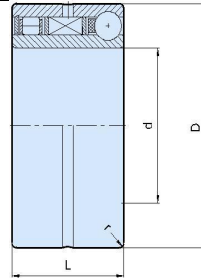


GFK Series

Type GFK is a sprag type freewheel integrated into a 59.. series ball bearing. This design provides high torque capacity for minimal outside diameter. It is a bearing supported type, delivered grease lubricated. Oil bath lubrication is also possible. Whatever the lubrication type, seals should be provided, as illustrated on the following page.

Torque transmission must be ensured by a press fit assembly into a rigid outer housing with R6 tolerance and onto a shaft with p5 tolerance. Initial radial clearance has been provided to take into account this heavy press fit. Operating temperature range: -20°C to +100°C. Peaks up to +120°C are acceptable for short periods. Please contact us for higher temperatures.

Freewheel Clutch Bearings: GFK Series



Motion(shanghai)Industrial Development Co.,Ltd

| Type | Size | | Overrunning speeds | | Bearing series | Loads | | | | | | | Weight |
|------|-----------|-----------------------|---|---|----------------|--------------|------------|---------------|-------------|-----------|-----------|-----------|--------|
| | | | $n_{imax}^{2)}$ [min ⁻¹] | $n_{amax}^{3)}$ [min ⁻¹] | | Rollers dyn. | Balls dyn. | Rollers stat. | Balls stat. | D | L | r | |
| MOTN | d [mm] | $T_{KN}^{1)}$ [Nm] | | | | C [N] | C [N] | C0 [N] | C0 [N] | D [mm] | L [mm] | r [mm] | [kg] |
| GFK | 20 | 51 | 5500 | 4000 | 5904 | 5600 | 4400 | 2900 | 2750 | 37 | 23 | 0,5 | 0,09 |
| GFK | 25 | 65 | 5300 | 3800 | 5905 | 6300 | 5300 | 3450 | 3350 | 42 | 23 | 0,5 | 0,11 |
| GFK | 30 | 95 | 5000 | 3500 | 5906 | 7700 | 5500 | 4600 | 3650 | 47 | 23 | 0,5 | 0,13 |
| GFK | 35 | 204 | 4600 | 3200 | 5907 | 8200 | 8500 | 5200 | 5700 | 55 | 27 | 1 | 0,20 |
| GFK | 40 | 315 | 4200 | 3000 | 5908 | 8650 | 9300 | 5750 | 6700 | 62 | 30 | 1 | 0,30 |
| GFK | 45 | 370 | 3800 | 2500 | 5909 | 9200 | 9700 | 6350 | 7300 | 68 | 30 | 1 | 0,34 |

www.motnbearing.com