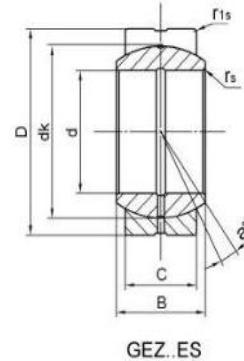


Spherical Plain Bearings are manufactured in a wide variety of materials and are designed to offer bearing solutions in almost any operating environment. LS Bearings offers a complete line of Spherical Plain Bearings available in inch and metric. These High-Quality Spherical Plain Bearings are widely used in Engineering Machinery, Aerospace Field, Aviation, New energy engineering, Hydropower Project, Metallurgical Machinery, Port Machinery, Rail transport, Architecture, Scientific research equipment, food machinery and so on.

Spherical plain bearing: GEZ-ES Series



Inner Race: Gcr15 Steel, hardened HRC 58-64, surface phosphated.
 Outer Race: Gcr15 Steel, hardened HRC 54-60, surface phosphated.
 Bore size $d \geq 140\text{mm}$: Inner and outer race are all Gcr15 SiMn.
 Sliding contact surfaces: Steel/Steel



Motion(shanghai)Industrial Development Co.,Ltd

Part No.	Dimensions(mm/inch)							Load ratings		a° ≈	weight ≈ kg
	d	D	B	c	dk	rs	r1s	Dynamic	Static		
GEZ12ES	12.7	22.225	11.1	9.525	18	0.15	0.6	13	41	6	0.022
GEZ12ES	0.5	0.875	0.437	0.375	0.707	0.006	0.024	13	41	6	0.022
GEZ15ES	15.875	26.988	13.894	11.913	23	0.15	0.6	22	65	6	0.036
GEZ15ES	0.625	1.0625	0.547	0.469	0.904	0.006	0.024	22	65	6	0.036
GEZ19ES	19.05	31.75	16.662	14.275	27.5	0.3	0.6	31	95	6	0.053
GEZ19ES	0.75	1.25	0.656	0.562	1.081	0.012	0.024	31	95	6	0.053
GEZ22ES	22.225	36.513	19.431	16.662	32	0.3	0.6	42	127	6	0.085
GEZ22ES	0.875	1.4375	0.756	0.656	1.258	0.012	0.024	42	127	6	0.085
GEZ25ES	25.4	41.275	22.225	19.05	36.5	0.3	0.6	56	166	6	0.121
GEZ25ES	1	1.625	0.875	0.75	1.437	0.012	0.024	56	166	6	0.121
GEZ31ES	31.75	50.8	27.762	23.8	45.5	0.6	0.6	86	260	6	0.23
GEZ31ES	1.25	2	1.093	0.937	1.788	0.024	0.024	86	260	6	0.23
GEZ34ES	34.925	55.563	30.15	26.187	49	0.6	1	102	310	6	0.35
GEZ34ES	1.375	2.1875	1.187	1.031	1.926	0.024	0.04	102	310	6	0.35
GEZ38ES	38.1	61.913	33.325	28.575	54.7	0.6	1	125	375	6	0.42
GEZ38ES	1.5	2.4375	1.312	1.125	2.154	0.024	0.04	125	375	6	0.42
GEZ44ES	44.45	71.438	38.887	33.325	63.9	0.6	1	170	510	6	0.64
GEZ44ES	1.75	2.8125	1.531	1.312	2.511	0.024	0.04	170	510	6	0.64
GEZ50ES	50.8	80.963	44.45	38.1	73	0.6	1	224	670	6	0.93
GEZ50ES	2	3.1875	1.75	1.5	2.869	0.024	0.04	224	670	6	0.93
GEZ57ES	57.15	90.488	50.013	42.85	82	0.6	1	280	850	6	1.3
GEZ57ES	2.25	3.5625	1.969	1.687	3.223	0.024	0.04	280	850	6	1.3
GEZ63ES	63.5	100.013	55.55	47.625	92	1	1	355	1060	6	1.85
GEZ63ES	2.5	3.9375	2.187	1.875	3.616	0.04	0.04	355	1060	6	1.85
GEZ69ES	69.85	111.125	61.112	52.375	100	1	1	415	1250	6	2.4
GEZ69ES	2.75	4.375	2.406	2.062	3.937	0.04	0.04	415	1250	6	2.4
GEZ76ES	76.2	120.65	66.675	57.15	109.5	1	1	500	1500	6	3.1
GEZ76ES	3	4.75	2.625	2.25	4.303	0.04	0.04	500	1500	6	3.1
GEZ82ES	82.55	130.175	72.238	61.9	119	1	1	585	1760	6	3.8
GEZ82ES	3.25	5.125	2.844	2.437	4.685	0.04	0.04	585	1760	6	3.8
GEZ88ES	88.9	139.7	77.775	66.675	128	1	1	680	2040	6	4.8
GEZ88ES	3.5	5.5	3.062	2.625	5.04	0.04	0.04	680	2040	6	4.8
GEZ95ES	95.25	149.225	83.337	71.425	137	1	1	780	2360	6	5.8
GEZ95ES	3.75	5.875	3.281	2.812	5.393	0.04	0.04	780	2360	6	5.8
GEZ101ES	101.6	158.75	88.9	76.2	146	1	1	900	2650	6	7
GEZ101ES	4	6.25	3.5	3	5.748	0.04	0.04	900	2650	6	7
GEZ107ES	107.95	168.275	94.463	80.95	155	1	1	1000	3000	6	8.41
GEZ107ES	4.25	6.625	3.719	3.187	6.102	0.04	0.04	1000	3000	6	8.41
GEZ114ES	114.3	177.8	100.013	85.725	164.5	1	1	1120	3400	6	9.8

GEZ114ES	4.5	7	3.937	3.375	6.476	0.04	0.04	1120	3400	6	9.8
www.motnbearing.com											