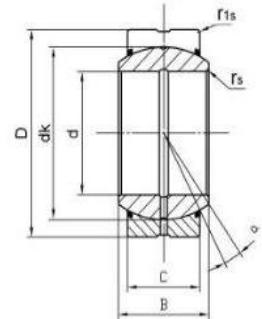


Spherical Plain Bearings are manufactured in a wide variety of materials and are designed to offer bearing solutions in almost any operating environment. LS Bearings offers a complete line of Spherical Plain Bearings available in inch and metric. These High-Quality Spherical Plain Bearings are widely used in Engineering Machinery, Aerospace Field, Aviation/, New energy engineering, Hydropower Project, Metallurgical Machinery, Port Machinery, Rail transport, Architecture, Scientific research equipment, food machinery and so on.

Spherical plain bearing: GEZ-ES-2RS Series



Inner Race: Gcr15 Steel, hardened HRC 58-64, surface phosphated.
Outer Race: Gcr15 Steel, hardened HRC 54-60, surface phosphated.
Bore size $d \geq 140$ mm: Inner and outer race are all Gcr15 SiMn.
Sliding contact surfaces: Steel/Steel



GEZ.ES-2RS

Motion(shanghai)Industrial Development Co.,Ltd

Part No.	Dimensions(mm/inch)							Load ratings		a° ≈	weight ≈ kg
								KN			
	d	D	B	c	dk	rs	r1s	Dynamic	Static		
GEZ25ES-2RS	25.4	41.275	22.225	19.05	36.5	0.3	0.6	56	166	6	0.121
GEZ25ES-2RS	1	1.625	0.875	0.75	1.437	0.012	0.024	56	166	6	0.121
GEZ31ES-2RS	31.75	50.8	27.762	23.8	45.5	0.6	0.6	86	260	6	0.23
GEZ31ES-2RS	1.25	2	1.093	0.937	1.788	0.024	0.024	86	260	6	0.23
GEZ34ES-2RS	34.925	55.563	30.15	26.187	49	0.6	1	102	310	6	0.35
GEZ34ES-2RS	1.375	2.1875	1.187	1.031	1.926	0.024	0.04	102	310	6	0.35
GEZ38ES-2RS	38.1	61.913	33.325	28.575	54.7	0.6	1	125	375	6	0.42
GEZ38ES-2RS	1.5	2.4375	1.312	1.125	2.154	0.024	0.04	125	375	6	0.42
GEZ44ES-2RS	44.45	71.438	38.887	33.325	63.9	0.6	1	170	510	6	0.64
GEZ44ES-2RS	1.75	2.8125	1.531	1.312	2.511	0.024	0.04	170	510	6	0.64
GEZ50ES-2RS	50.8	80.963	44.45	38.1	73	0.6	1	224	670	6	0.93
GEZ50ES-2RS	2	3.1875	1.75	1.5	2.869	0.024	0.04	224	670	6	0.93
GEZ57ES-2RS	57.15	90.488	50.013	42.85	82	0.6	1	280	850	6	1.3
GEZ57ES-2RS	2.25	3.5625	1.969	1.687	3.223	0.024	0.04	280	850	6	1.3
GEZ63ES-2RS	63.5	100.013	55.55	47.625	92	1	1	355	1060	6	1.85
GEZ63ES-2RS	2.5	3.9375	2.187	1.875	3.616	0.04	0.04	355	1060	6	1.85
GEZ69ES-2RS	69.85	111.125	61.112	52.375	100	1	1	415	1250	6	2.4
GEZ69ES-2RS	2.75	4.375	2.406	2.062	3.937	0.04	0.04	415	1250	6	2.4
GEZ76ES-2RS	76.2	120.65	66.675	57.15	109.5	1	1	500	1500	6	3.1
GEZ76ES-2RS	3	4.75	2.625	2.25	4.303	0.04	0.04	500	1500	6	3.1
GEZ82ES-2RS	82.55	130.175	72.238	61.9	119	1	1	585	1760	6	3.8
GEZ82ES-2RS	3.25	5.125	2.844	2.437	4.685	0.04	0.04	585	1760	6	3.8
GEZ88ES-2RS	88.9	139.7	77.775	66.675	128	1	1	680	2040	6	4.8
GEZ88ES-2RS	3.5	5.5	3.062	2.625	5.04	0.04	0.04	680	2040	6	4.8
GEZ95ES-2RS	95.25	149.225	83.337	71.425	137	1	1	780	2360	6	5.8
GEZ95ES-2RS	3.75	5.875	3.281	2.812	5.393	0.04	0.04	780	2360	6	5.8
GEZ101ES-2RS	101.6	158.75	88.9	76.2	146	1	1	900	2650	6	7
GEZ101ES-2RS	4	6.25	3.5	3	5.748	0.04	0.04	900	2650	6	7
GEZ107ES-2RS	107.95	168.275	94.463	80.95	155	1	1	1000	3000	6	8.41
GEZ107ES-2RS	4.25	6.625	3.719	3.187	6.102	0.04	0.04	1000	3000	6	8.41
GEZ114ES-2RS	114.3	177.8	100.013	85.725	164.5	1	1	1120	3400	6	9.8
GEZ114ES-2RS	4.5	7	3.937	3.375	6.476	0.04	0.04	1120	3400	6	9.8

www.motnbearing.com