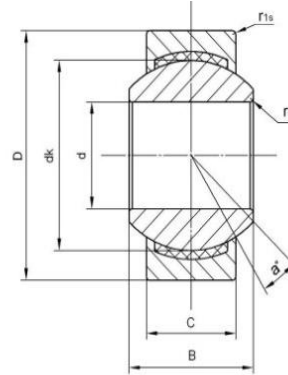


Spherical Plain Bearings are manufactured in a wide variety of materials and are designed to offer bearing solutions in almost any operating environment. LS Bearings offers a complete line of Spherical Plain Bearings available in inch and metric. These High-Quality Spherical Plain Bearings are widely used in Engineering Machinery, Aerospace Field, Aviation/, New energy engineering, Hydropower Project, Metallurgical Machinery, Port Machinery, Rail transport, Architecture, Scientific research equipment, food machinery and so on.

Spherical plain bearing: GE-C Series



Ball: Gcr15 Steel, hardened HRC 58-64, Precision ground, hard chrome plated.
 Outer Race: Carbon Steel with PTFE composite.
 Sliding contact surfaces: Steel/PTFE composite.



Motion(shanghai)Industrial Development Co.,Ltd

Part No.	Dimensions(mm)							Load ratings		a°	weight
	d	D	B	c	dk	rs	r1s min	KN		≈	≈kg
								Dynamic	Static		
GE4C	4	12	5	3	8	0.3	0.3	2.1	5.4	16	0.003
GE5C	5	14	6	4	10	0.3	0.3	3.6	9.1	13	0.005
GE6C	6	14	6	4	10	0.3	0.3	3.6	9.1	13	0.004
GE8C	8	16	8	5	13	0.3	0.3	5.8	14	15	0.008
GE10C	10	19	9	6	16	0.3	0.3	8.6	21	12	0.011
GE12C	12	22	10	7	18	0.3	0.3	11	28	10	0.015
GE15C	15	26	12	9	22	0.3	0.3	18	45	8	0.027
GE17C	17	30	14	10	25	0.3	0.3	22	56	10	0.041
GE20C	20	35	16	12	29	0.3	0.3	31	78	9	0.066
GE25C	25	42	20	16	35.5	0.6	0.6	51	127	7	0.119
GE30C	30	47	22	18	40.7	0.6	0.6	65	166	6	0.163

www.motnbearing.com