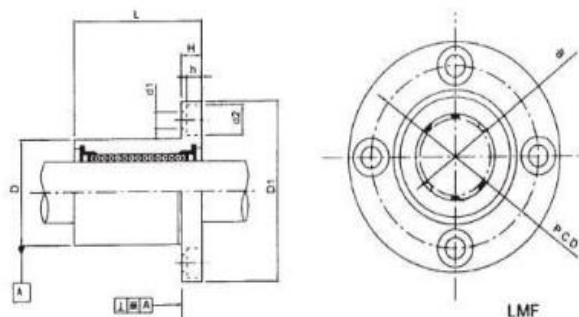


Considered by many to be the default choice for linear motion applications, the round shaft reticulating linear ball bearing is a tried and tested option suitable for most linear motion applications. This is the double length, ISO Metric version with a round flange located at one end. These bearings are most commonly found in Europe. It is size interchangeable with other manufacturers and with PBC's Simplicity bearings. Some additional benefits include:

Static Load Capacities up to 15,900 N (3,500 lb)  
 Dynamic Load Capacities up to 6,000 N (1,300 lb)  
 Static Moment Capacities up to 399 Nm (290 ft-lb)  
 Size Interchangeable with industry standards and with "Simplicity" series  
 Double Length with End Mount Round Flange  
 Low Coefficient of Friction  
 Heat treated alloy steel shell  
 Resin retainer for reduced noise  
 Good temperature range: -20/+80C (-4/+176F)  
 Double Seals included standard – no additional cost!

#### Flanged linear motion ball bearing: LMF...UU Series



Motion(shanghai)Industrial Development Co.,Ltd

Nominal shaft	Resin retainer						
	LMF...UU	Weight(gf)	LMK...UU	Weight(gf)	dr	D	L
6	LMF6UU	24	LMK6UU	18	6	12	19
8	LMF8SUU	32	LMK8SUU	24	8	15	17
8	LMF8UU	37	LMK8UU	29	8	15	24
10	LMF10UU	72	LMK10UU	52	10	19	29
12	LMF12UU	76	LMK12UU	57	12	21	30
13	LMF13UU	88	LMK13UU	72	13	23	32
16	LMF16UU	120	LMK16UU	104	16	28	37
20	LMF20UU	180	LMK20UU	145	20	32	42
25	LMF25UU	340	LMK25UU	300	25	40	59
30	LMF30UU	470	LMK30UU	375	30	45	64
35	LMF35UU	650	LMK35UU	560	35	52	70
40	LMF40UU	1060	LMK40UU	880	40	60	80
50	LMF50UU	2200	LMK50UU	2000	50	80	100
60	LMF60UU	3000	LMK60UU	2560	60	90	110
80	LMF80UU	5800	LMK80UU	5300	80	120	140
100	LMF100UU	10600	LMK100UU	9900	100	150	175

www.motnbearing.com