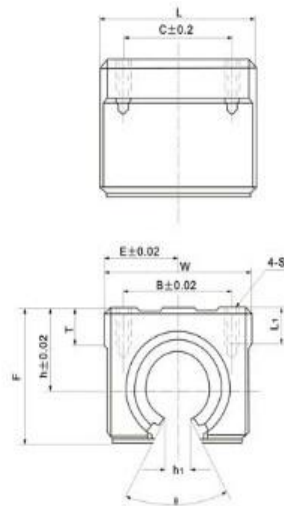
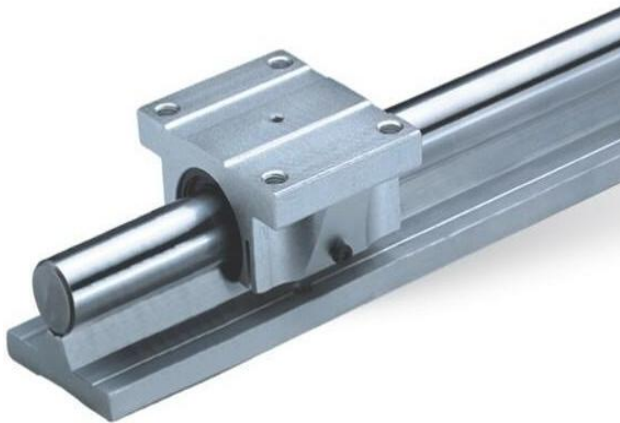


Available from PBC Linear are the Chieftek-Precision, Inc., high performance ball-type linear guideways. Equipped with improved features such as stainless steel reinforced end plates, internal eco-lubrication system and overall dust proof design, these new ball-type linear guides offer high speed and repeatable linear motion at extended life performance. The linear guides are gothic profile designed with 45° contact angle to attain equal load and balance the forces in all directions – providing high load capacity and excellent system stability. PBC 's ball type linear guides are available in multiple precision options and a wide selection of sizes to directly match up with the customers application requirements.

- Full range of profile sizes – miniature (3, 5, 7, 9, 12, and 15mm) and standard (15, 20, 25, and 30mm)
- Multiple precision options: normal (N), high (H), precise (P), super (SP) and Ultra (U)
- High load and moment capacity
- Internal eco-lubrication system
- Dust proof design
- Stainless Steel Reinforced End plates – enhanced structural design

Support rail units: SBR Series



Motion(shanghai)Industrial Development Co.,Ltd

Designation		Shaft	Basic load rating		Weight(gf)		Dimensions(mm)			
Rail Units	Slide Units	Diameter	Dynamic CN	Static Co N	Slide Units(kgf)	Rail Units(kgf/m)	D	h	H	E
SBR16SA	SBR16UUA	16	770	1170	0.15	2.56	22.5	25	45	2.5
SBR20SA	SBR20UUA	20	860	1370	0.2	3.5	24	27	50	1.5
SBR25SA	SBR25UUA	25	980	1560	0.45	5.3	30	33	60	2.5
SBR30SA	SBR30UUA	30	1560	2740	0.63	7.38	35	37	70	5
SBR35SA	SBR35UUA	35	1660	3130	0.92	9.68	40	43	80	7.5
SBR40SA	SBR40UUA	40	2150	4010	1.33	12.69	45	48	90	7.5
SBR50SA	SBR50UUA	50	3820	7930	3	20.46	60	62	115	12.5

www.motnbearing.com