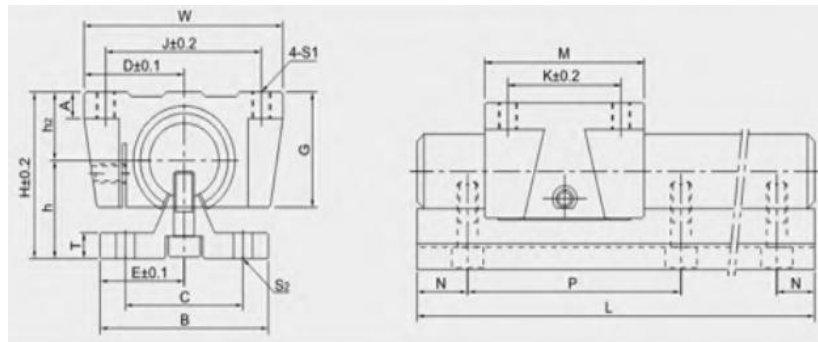


Available from PBC Linear are the Chieftek-Precision, Inc., high performance ball-type linear guideways. Equipped with improved features such as stainless steel reinforced end plates, internal eco-lubrication system and overall dust proof design, these new ball-type linear guides offer high speed and repeatable linear motion at extended life performance. The linear guides are gothic profile designed with 45° contact angle to attain equal load and balance the forces in all directions – providing high load capacity and excellent system stability. PBC 's ball type linear guides are available in multiple precision options and a wide selection of sizes to directly match up with the customers application requirements.

- Full range of profile sizes – miniature (3, 5, 7, 9, 12, and 15mm) and standard (15, 20, 25, and 30mm)
- Multiple precision options: normal (N), high (H), precise (P), super (SP) and Ultra (U)
- High load and moment capacity
- Internal eco-lubrication system
- Dust proof design
- Stainless Steel Reinforced End plates – enhanced structural design

Support rail units: TBR...S Series



Motion(shanghai)Industrial Development Co.,Ltd

Designation		Shaft	Basic load rating		Weight(gf)		Dimensions(mm)			
Rail Units	Slide Units	Diameter	Dynamic CN	Static Co N	Slide Units(kgf)	Rail Units(kgf/m)	D	h	H	E
TBR16S	TBR16UU	16	392	490	0.18	2.45	31	22	40	25
TBR20S	TBR20UU	20	784	1176	0.3	3.6	34	29	50	27.5
TBR25S	TBR25UU	25	1568	2352	0.6	5.6	41	32	60	32.5
TBR30S	TBR30UU	30	1764	2940	0.9	8	45.5	36.5	70	37.5

www.motnbearing.com