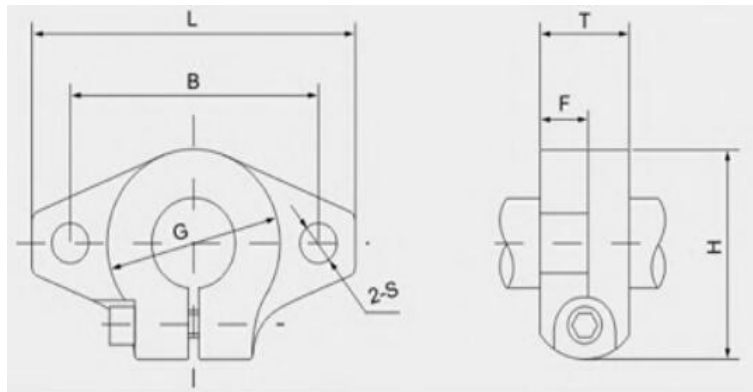


The Linear Aluminum End Support Block (NSB) can be used for end or intermittent shaft support. The aluminum end support block is lightweight and strong, and can be used with all shaft types. Ideally, they should be used where deflection between supports is not a problem.

Available in inch sizes from 1.4" thru 2"
Instant bolt-down installation

Slide support: SHF Series



Motion(shanghai)Industrial Development Co.,Ltd

Designation	Shaft Diameter	Dimensions(mm)								Mounting bolt	Clamping Bolt	Weight(gf)
		L	T	F	B	G	H	S				
SHF10	10	43	10	5	32	20	24	5.5	M5	M4	13	
SHF12	12	47	13	7	36	25	28	5.5	M5	M4	20	
SHF13	13	47	13	7	36	25	28	5.5	M5	M4	20	
SHF16	16	50	16	8	40	28	31	5.5	M5	M4	27	
SHF20	20	60	20	8	48	34	37	7	M6	M5	40	
SHF25	25	70	25	10	56	40	42	7	M6	M5	60	
SHF30	30	80	30	12	64	46	50	9	M8	M6	110	
SHF35	35	92	35	14	72	50	58	12	M10	M8	380	
SHF40	40	102	40	16	80	56	67	12	M10	M10	510	
SHF50	50	122	50	19	96	70	83	14	M12	M12	890	
SHF60	60	140	60	23	112	82	95	14	M12	M12	1500	

www.motnbearing.com