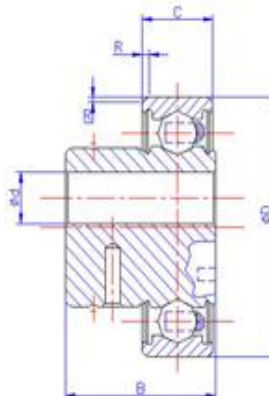


Tensioner Bearing Used for the car, bus, truck of Korean, German, American and Japanese. For the brand like Honda, Toyota, Mazda, Mitsubishi, Nissan, Kia, Hyundai, Audi, Mercedes-Benz, Volkswagen, Chevrolet, Ford, Buick ect.

Tensioner Bearing



Motion(shanghai)Industrial Development Co.,Ltd

Bearing No.	Dimension (mm)				Weight Kg	Relative No.
	d	D	B	C		
ZJL600026/198	8.2	60	19.8	26	-	PAT631471
ZJL3600315/285	8.3	36	31.5	28.5	-	BRG45
ZJL3700393/34	10.3	37	39.3	24	-	F-12135
ZJL520032/30	10.2	52	32	30	-	564583
ZJL3700283/27	10.3	37	28.3	27	-	T123880.2
ZJL8200206/30	12	82	20.6	30	0.205	256801
ZJL800015/245	20	80	15	24.5	-	BLG444P
ZJL4700176/24	24.2	47	24	27.6	0.16	11-142
ZJL62000206/28	25	62	20.6	28	0.18	-
ZJL6700206/34-I	25	67	20.6	34	-	PTB40BD49
ZJL600206/23	25	60	20.6	23	3	374122
ZJL600206/27	25	60	20.6	27	0.325	374125
ZJL7050206/24	25	70.5	20.6	24	0.46	0.37413
ZJL6700206/24	25	67	20.6	24	0.435	374133
ZJL7050206/28	25	70.5	20.6	28	0.505	374135
ZJL6700206/28	25	67	20.6	28	0.48	374138
ZJL6400206/34	25	64	20.6	34	0.47	374145
ZJL6700206/34	25	67	20.6	34	0.475	374148
LHV100160G.B	25.2	60.1	35.6	34	0.349	LHV100160G.B
ZJL570013/24	30	57	13	24	0.2	601006
ZJL45900032	45	90	32.8	32	0.92	384093
ZJL4000255/12	8	40	25.5	12	0.121	GT60790
ZJL470034/12	8.5	47	34	12	0.222	GT60430
ZJL5200283/25	9.5	52	28.25	25	0.185	GT20040
ZJL580013/34	10	58	28.5	34	0.198	GT60180
ZJL5800285/32	10	58	28.5	32	0.25	GT60160
ZJL6200455/22	10.1	62	45.5	22	0.45	GT60420
ZJL4200294/12	10.2	42	29.4	12	0.11	GT60860
ZJL4700196/12	10.2	47	19.6	12	0.108	GT60150
ZJL550015/22	10.2	55	15	22	0.247	GT60090
ZJL550026/23	10.2	55	26	23	0.33	GT60400
ZJL47002725/12	10.5	47	28.8	12	0.121	GT60700
ZJL5000245/27	11.2	50	24.5	27	0.192	GT60240
ZJL5000283/14	13.2	50	28.3	14	0.121	GT60840
ZJL59003545/285	13.2	59	35.45	28.5	0.286	GT60830
ZJL6000339/30	13.2	60	33.9	30	0.299	GT60070

ZJL5000338/31	23.8	50	33.8	31	0.232	GT60100
ZJL500040/31	23.8	50	40	31	0.25	GT60490
ZJL5000356/31	25	50	35.6	31	0.222	GT60110
ZJL570013/308	30	57	13	30.8	0.14	GT60190
ZJL6200285/368	40	62	28.5	36.8	0.279	GT60380
ZJL6380206/342	25	63.8	20.6	34.2	-	63340B
ZJL710012/26	17	71	12	26	-	L-234
PT631471	8.2	60	19.8	26	-	-
BRG45	8.3	36	31.5	28.5	-	-
F-125135	10.3	37	39.3	24	-	-
564583	10.2	52	32	30	-	-
T123880.2	10.3	37	28.3	27	-	-
256801	12	82	20.6	30	0.205	-
BLG444P	20	80	15	24.5	-	-
11-142	24.2	47	24	27.6	0.16	-
62000206/28	25	62	20.6	28	0.18	-
PTB40BD49	25	67	20.6	34	-	-
374122	25	60	20.6	23	0.3	-
374125	25	60	20.6	27	0.325	-
374130	25	70.5	20.6	24	0.46	-
374133	25	67	20.6	24	0.435	-
374135	25	70.5	20.6	28	0.505	-
374138	25	67	20.6	28	0.48	-
374145	25	64	20.6	34	0.47	-
374148	25	67	20.6	34	0.475	-
LHV100160G.B	25.2	60.1	35.6	34	0.349	-
601006	30	57	13	24	0.2	-
384093	45	90	32.8	32	0.92	-
GT60790	8	40	25.5	12	0.121	-
GT60430	8.5	47	34	12	0.222	-
GT20040	9.5	52	28.25	25	0.185	-
GT60180	10	58	28.5	34	0.198	-
GT60160	10	58	28.5	32	0.25	-
GT60420	10.1	62	45.5	22	0.45	-
GT60860	10.1	42	29.4	12	0.11	-
GT60150	10.2	47	19.6	12	0.108	-
GT60090	10.2	55	15	22	0.247	-
GT60400	10.2	55	26	23	0.33	-
GT60700	10.5	47	28.8	12	0.121	-
GT60240	11.2	50	24.5	27	0.192	-
GT60840	13.2	50	28.3	14	0.121	-
GT60830	13.2	59	35.45	28.5	0.286	-
GT60070	13.2	60	33.9	30	0.299	-
GT60100	23.8	50	33.8	31	0.232	-
GT60490	23.8	50	40	31	0.25	-
GT60110	25	50	35.6	31	0.222	-
GT60190	30	57	13	30.8	0.14	-
GT60380	40	62	28.5	36.8	0.279	-
63340B	25	63.8	20.6	34.2	-	-
L-234	17	71	12	26	-	-