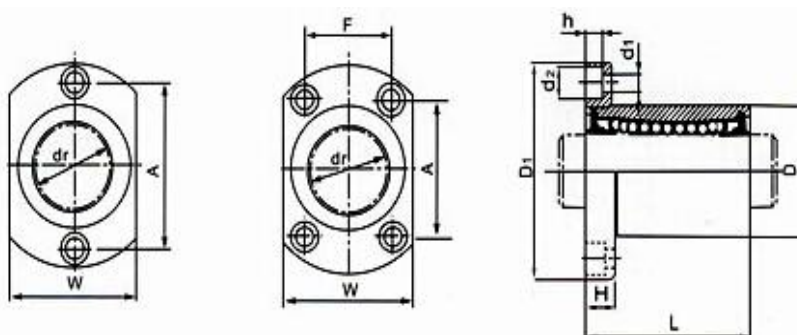


Considered by many to be the default choice for linear motion applications, the round shaft reticulating linear ball bearing is a tried and tested option suitable for most linear motion applications. This is the double length, ISO Metric version with a round flange located at one end. These bearings are most commonly found in Europe. It is size interchangeable with other manufacturers and with PBC's Simplicity bearings. Some additional benefits include:

Static Load Capacities up to 15,900 N (3,500 lb)
 Dynamic Load Capacities up to 6,000 N (1,300 lb)
 Static Moment Capacities up to 399 Nm (290 ft-lb)
 Size Interchangeable with industry standards and with "Simplicity" series
 Double Length with End Mount Round Flange
 Low Coefficient of Friction
 Heat treated alloy steel shell
 Resin retainer for reduced noise
 Good temperature range: -20/+80C (-4/+176F)
 Double Seals included standard – no additional cost!

Flanged linear motion ball bearing: LMH...UU Series



Motion(shanghai)Industrial Development Co.,Ltd

Nominal shaft diameter (mm)	Resin retainer				
	LMHF...UU	Weight(qf)	dr	D	L
6	LMHF6UU	21	6	12	19
8	LMHF8UU	33	8	15	24
10	LMHF10UU	64	10	19	29
12	LMHF12UU	68	12	21	30
13	LMHF13UU	81	13	23	32
16	LMHF16UU	112	16	28	37
20	LMHF20UU	167	20	32	42
25	LMHF25UU	325	25	40	59
30	LMHF30UU	388	30	45	64

www.motnbearing.com